

FUJITSU Hi-Wall Plasma



NEW ZEALAND'S FAVOURITE AIR™

FUJITSU

INVERTER

Hi-Wall Plasma

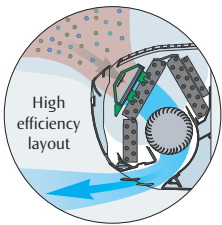
■ Fujitsu's plasma air cleaning unit effectively cleans the air passing through it.

Plasma unit

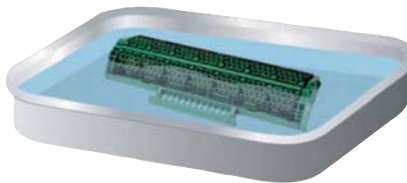
Minute dust particles are thoroughly collected by an electrostatic filter and odour is suppressed using negatively charged ions. This improved filter is highly effective in collecting dust whilst maintaining clean, odourless air.



Plasma air filter mechanism



Washable Filter



Restored to the same performance as new, each time it is washed.

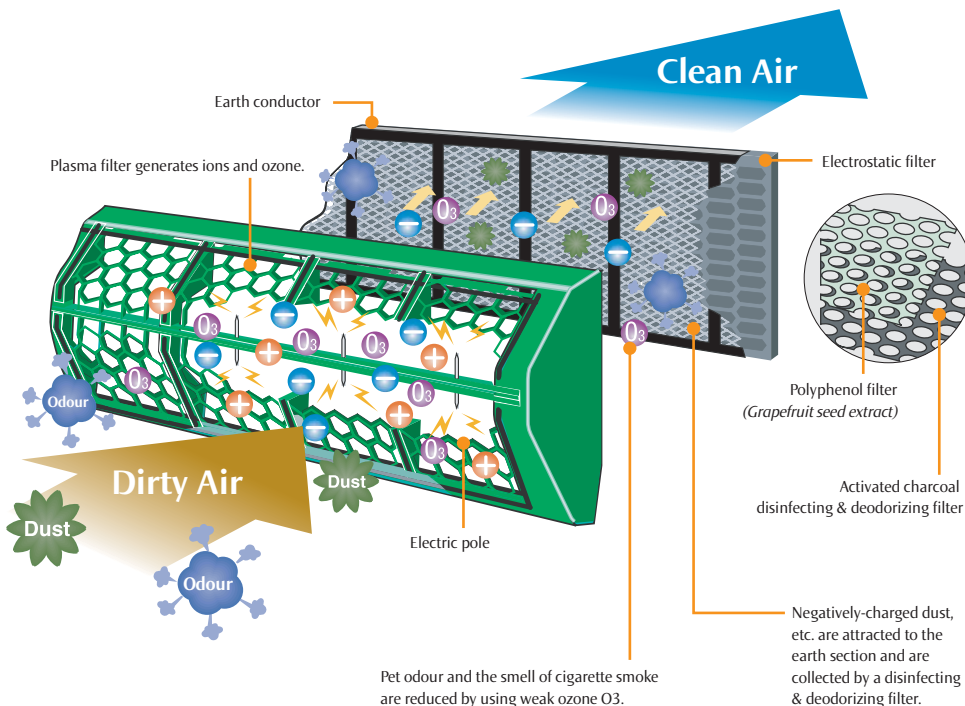
■ Plasma air cleaner quickly removes small dust particles and odours.

Collects dirt such as...

House dust / Pet fur and dander / Cigarette smoke / Mite carcass / Mould spore / Pollen.

Absorbs odours such as...

Smell of cigarette smoke / Pet odour / Kitchen garbage smell / Perspiration and body odour.

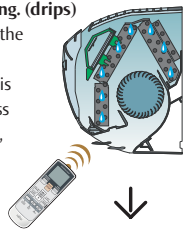


Inner Drying Operation.

This model is equipped with an inner drying function.

Covered with beading. (drips)

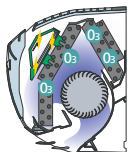
Bacteria can grow in the beading, causing bad odours. To prevent this you only need to press the COIL DRY button, which starts the 30 minute (approx) dry operation.



Removes moisture.



Sterilization.



"Inner drying operation" and "ozone sterilizing operation" keep the inside of the heat pump clean. That's why air from the heat pump is cleaner and more efficient.

NEW!



Infra red remote control



For ASTB09/12



For ASTB18/24



ASTB09LD ALL DC PAM ENERGY ENDORSEMENT WINNER 2006
 Hi-COP:4.44(W/W)
 C 2.60kW / 8,900BTU/h
 H 3.60kW / 12,300BTU/h

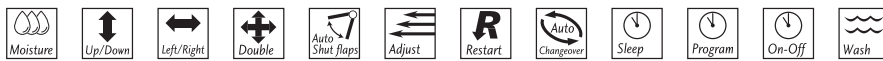
ASTB12LD ALL DC PAM ENERGY ENDORSEMENT WINNER 2006
 Hi-COP:3.93(W/W)
 C 3.50kW / 11,900BTU/h
 H 4.80kW / 16,400BTU/h

ASTB18LD ALL DC PAM ENERGY ENDORSEMENT WINNER 2006
 Hi-COP:3.6(W/W)
 C 5.20kW / 17,800BTU/h
 H 6.25kW / 21,300BTU/h

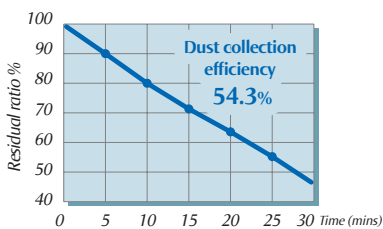
NEW!



ASTB24LD ALL DC PAM
 Hi-COP:3.5(W/W)
 C 7.4 kW / 25,200BTU/h
 H 8.5 kW / 29,000BTU/h

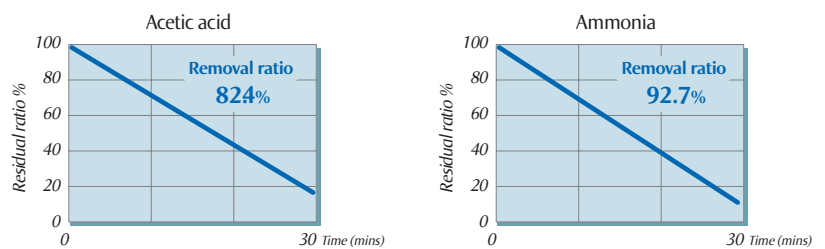


Dust collection performance



Test method: JEM 1417 Test room: 30m³, sealed room
 Measurement conditions: Cigarette smoke (5 cigarettes burned simultaneously)

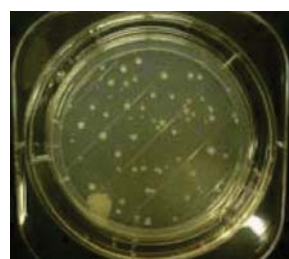
Deodorizing performance



Test method: JEM1467 Test room : 1 m³, acryl sealed box Measurement method: Cigarette smoke (5 cigarettes burned simultaneously)

Sterilization effect by Polypenol ceraglaze
 You can see the difference!

Tested by KITAZATO environment science centre Experiment bacteria: Staphylococcus Aureus/Escherichia coil
 Test NO. :15-0253 Test condition: at 20 degrees C/24 hour action
 The undiluted solution of the specimen has made the specimen fluid and suspensoid 0.1ml (approximately 107CFU/ml) of the test bacteria was inoculated.



SPECIFICATIONS

Type			Inverter	Inverter	Inverter	Inverter	
Model No.	Indoor Unit		ASTB09LDC	ASTB12LDC	ASTB18LDC	ASTB24LDC	
	Outdoor Unit		AOTS09LDC	AOTS12LDC	AOTS18LDC	AOTS24LDC	
Reverse Cycle			Yes	Yes	Yes	Yes	
Cooling Capacities	Watts		2,600	3,500	5,200	7,400	
	BTU/Hr		8,900	11,900	17,700	25,300	
Cooling Range	Watts		500 - 3,700	900 - 4,300	900 - 5,700	900 - 8,000	
	BTU/Hr		1,700 - 12,600	3,100 - 14,700	3,100 - 19,400	3,100 - 27,300	
Heating Capacities	Watts		3,600	4,800	6,250	8,500	
	BTU/Hr		12,300	16,400	21,300	29,000	
Heating Range	Watts		500 - 6,100	900 - 6,700	900 - 9,100	900 - 10,600	
	BTU/Hr		1,700 - 20,800	3,100 - 22,900	3,100 - 31,000	3,100 - 36,200	
Star Rating	Cool		6	6	4	4	
	Heat		6	6	5	5	
E.E.R Cool	W/W		4.2	3.8	3.0	3.0	
C.O.P Heat	W/W		4.4	3.9	3.6	3.5	
Running Current	Cool	Amps	2.8 (6 Max)	4.1 (7 Max)	7.3 (9 Max)	10.4 (12 Max)	
	Heat	Amps	3.7 (8.5 Max)	5.3 (10 Max)	7.4 (13.5 Max)	10.2 (17.5 Max)	
Input Power	Cool	Watts	610 (250 - 1,380)	910 (250 - 1,610)	1720 (90 - 2,000)	2460 (110 - 2,620)	
	Heat	Watts	810 (250 - 1,960)	1220 (250 - 2,300)	1730 (90 - 2,660)	2420 (110 - 3,680)	
Moisture Removal	L/Hr		1.3	1.8	2.8	3.0	
Fan Speeds			4	4	4	4	
Air Circulation		l/s	165	176	194	305	
Indoor Sound Pressure Level	Quiet	DbA at 1m	20	20	25	33	
	Low	DbA at 1m	29	29	33	38	
	Med	DbA at 1m	35	35	39	43	
	High	DbA at 1m	40	41	45	49	
Outdoor Sound Pressure Level		DbA at 1m	48	49	50	52	
Outdoor Sound Power Level		DbA	65	67	68	68	
Dimensions and Weights	I.U.	Height	mm	283	283	283	320
		Width	mm	790	790	790	998
		Depth	mm	230	230	230	228
		Net Wght	kg	9.5	9.5	9.5	14
	O.U.	Height	mm	540	540	578	578
		Width	mm	790	790	790	790
		Depth	mm	290	290	300	315
		Net Wght	kg	34	36	40	44
Compressor Type			Rotary	Rotary	Rotary	Scroll	
Interconnect cables - size	Qty - mm2		4 - 2.5	4 - 2.5	4 - 2.5	4 - 2.5	
Recommended Min. Power Cable	mm2		2.5	2.5	2.5	4	
Phase - Frequency	Ph - Hz		1 - 50	1 - 50	1 - 50	1 - 50	
Power Supply Attachment			Indoor	Indoor	Indoor	Outdoor	
Power Supply	Volts		230	230	230	230	
Plug Size (if applicable)			10	15	15	N/A	
Refrigerant Type			R410a	R410a	R410a	R410a	
Connection Pipe Sizes	Gas	mm	9.52	9.52	12.7	15.88	
	Liquid	mm	6.35	6.35	6.35	6.35	
Minimum Pipe Length		Metre	3	3	3	5	
Maximum Pipe Length		Metre	20	20	20	30	
Maximum Pipe Height		Metre	15	15	15	20	
Pre Charged length		Metre	15	15	15	15	
Pipe Connection Method			Flare	Flare	Flare	Flare	
Outdoor Operating Temp	Cool	Degree C	-10 to 43	-10 to 43	-10 to 43	-10 to 43	
	Heat	Degree C	-15 to 24	-15 to 24	-15 to 24	-15 to 24	



NEW ZEALAND'S FAVOURITE AIR™

Fujitsu General New Zealand Limited
www.fujitsugeneral.co.nz

Products depicted in this brochure contain high operating pressure R410a refrigerant. It is illegal to vent that refrigerant to the atmosphere. Only persons qualified and experienced in the installation, service and repair of these products are authorised to undertake such work.

Fujitsu General Accredited Installers have shown they have the necessary equipment and have accepted responsibility for their installations and the requirements of any statutes or laws.

Due to ongoing Research and Development specifications and designs are subject to improvement without notice therefore relevant manuals must be consulted before any action is taken to install or service these products

Heating/Cooling capacities and run current tests are based on the requirements of AS/NZS3283, that standard tests at the temperature below.

COOLING: Indoor Temp: 27°C DB / 19°C WB
Outdoor Temp: 35°C DB

HEATING: Indoor Temp: 20°C DB
Outdoor Temp: 7°C DB / 6°C WB

As actual temperature ranges in New Zealand vary considerably only competent people should provide advice as to size and placement of units.

Sound power level is tested to AS/NZS1217.

Recommended cable sizes are based in AS/NZS3000 and AS/NZS3008.

Fujitsu General New Zealand Ltd warrants the equipment against any defects in materials and factory workmanship for a period of five years from the date of installation, or for 6 years if installed by an Accredited Installer. This warranty does not cover defects or failures which are attributable to; incorrect or improper installation; environmental damage; airflow restriction; inadequate electrical supply; getting access to the product.

EXPLANATION OF FEATURES (MODEL DEPENDENT)

- Moisture Removal**
The computer effectively dehumidifies the air.
- Up/Down Swing Flaps**
The up/down flaps automatically swing to up and down.
- Right/Left Swing Flaps**
The right/left flaps automatically swing in either direction.
- Double Swing Automatic**
Complex swing action of flaps enables automatically to swing both horizontal and vertical directions.
- Automatic Flaps**
The position of the flaps is set automatically to match the operating mode. It is also possible to adjust the flaps using the remote control.
- Auto Shut Flaps**
The auto shut flaps close or open automatically when the unit stops or starts.

- Automatic Air Flow Adjustment**
The micro-computer automatically adjusts the air flow effectively to follow the changes of room temperature.
- Auto Restart**
In the event of a temporary power failure, the air conditioner will automatically restart in the same operating mode as before, once the power supply is restored.
- Auto-Changeover**
The unit automatically switches between heating and cooling modes based on your temperature setting and the room temperature.
- Sleep Timer**
The micro-computer gradually changes the room temperature automatically to afford a comfortable night's sleep.
- Program Timer**
This digital timer allows selection of one of four options. ON, OFF, ON → OFF, or OFF → ON, once in a 24 hour period.
- ON-OFF Timer**
ON-OFF timer can be set to operate once in a 24 hour period.

- Washable Panel**
- i PAM**
Fujitsu's advanced inverter technology now includes i PAM (Intelligent Power Module-Pulse Amplitude Modulation), to enable high output and high efficiency.
- V-PAM**
V-Pam Inverter technology increases the maximum output of the compressor significantly and enables high power and high efficiency.
- Top Energy Saver Award**
For the most energy efficient Star Rated Products.
- Cooling**
- Heating**



ISO 9002
Certified number: JQA-2005



ISO 14001
Certified number: EC88J1137

Hamamatsu Fujitsu General Ltd.



All products specified in this brochure comply with the Australian Communications Authority's (ACA) requirements for Electromagnetic Compatibility (EMC).



THE GLOBAL MARK OF ENERGY EFFICIENCY



5 Year full parts and labour warranty. 6 years (an extra full year's warranty) when you use a Fujitsu Accredited installer.